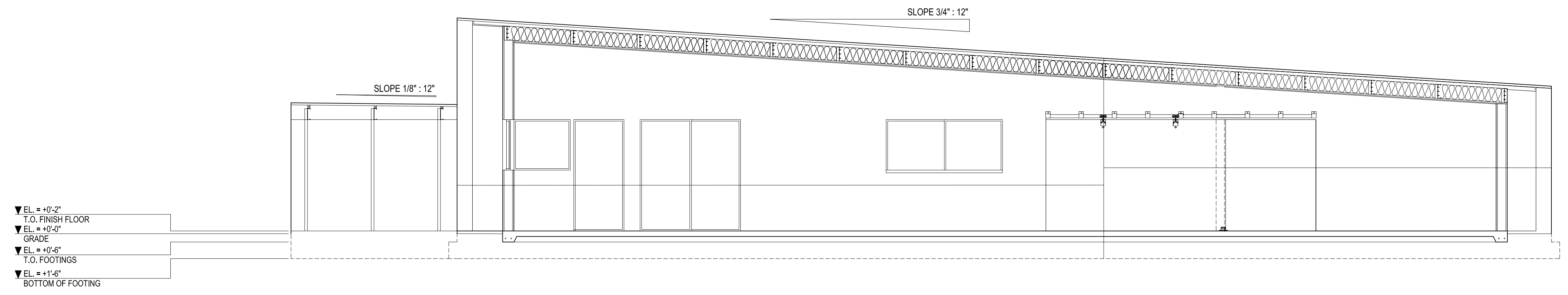
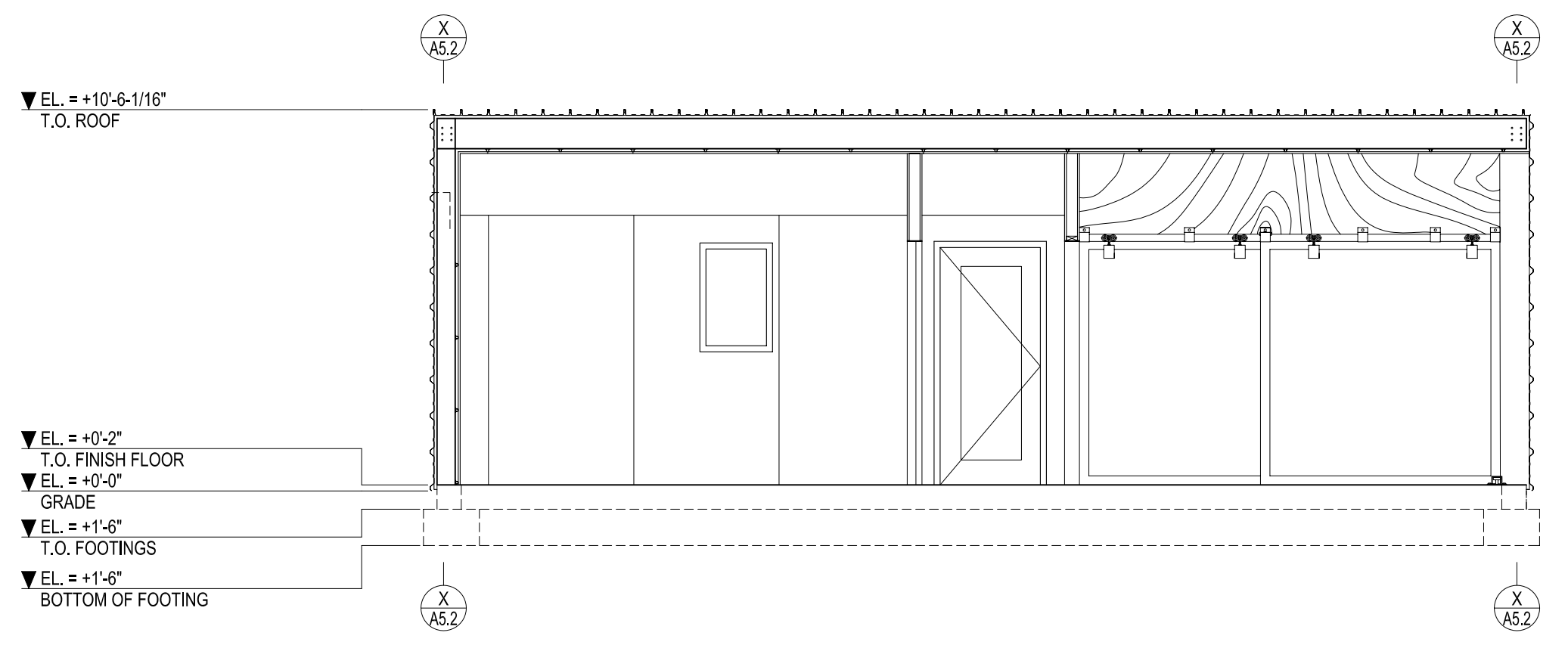


- KEYNOTES**
1. MBCI R 18 GA METAL PANEL WITH RIBS ORIENTED HORIZONTALLY - REFER TO CLADDING DETAILS IN CLADDING DETAILS IN ARCHITECTURAL SET FOR PANEL OVERLAP, WEATHER PROOFING, AND MECHANICAL FASTENING SPECIFICATIONS.
  2. BREAK FORMED GALVANIZED 20 GA SHEET METAL TRIM CLOSURE.
  3. BREAK FORMED GALVANIZED 20 GA
  - 4.
  - 5.
  - 6.

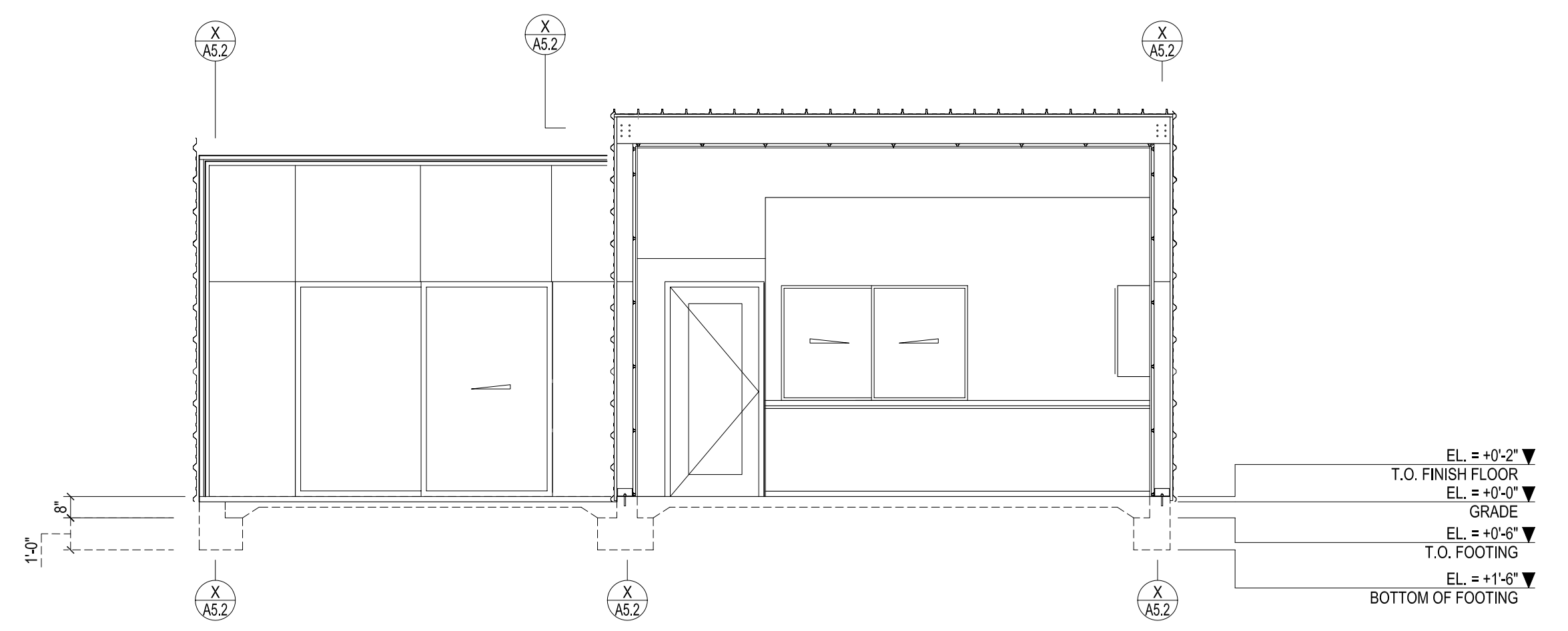


**4 SECTION**  
SCALE: 1/4" = 1'-0"

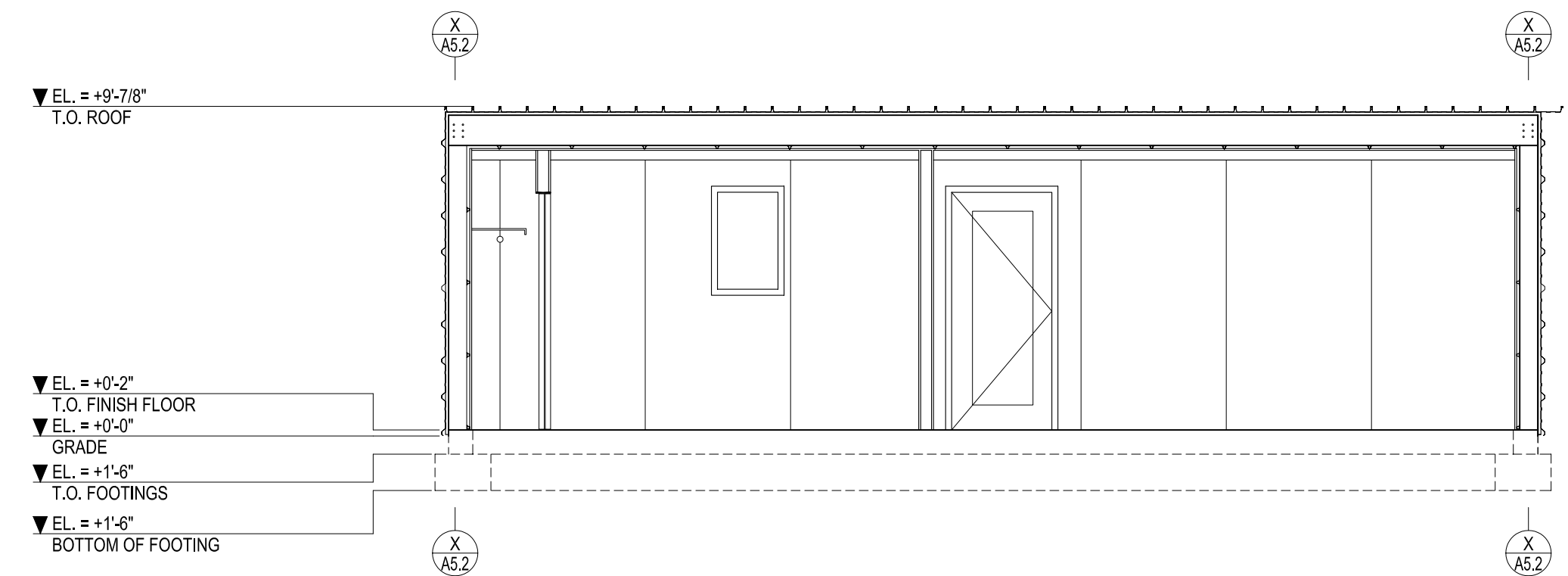


- WALL ASSEMBLY NOTES**
- W1 - 1 LAYER 5/8" GYPSUM BD EACH SIDE OF 3-1/2" x 22 GA METAL STUD AT 24" O.C.
  - W2 - 1 LAYER 5/8" GYPSUM BD EACH SIDE OF 6" x 22 GA METAL STUDS AT 24" O.C.
  - W3 - 5/8" GYPSUM BD OVER 6" x 22 GA METAL STUD OVER 5/8" USGS GREEN BD OVER CERAMIC TILE.
  - W4 - 5/8" GYPSUM BD OVER 3-1/2" x 22 GA METAL STUD OVER 5/8" USGS GREEN BD OVER CERAMIC TILE.
  - W5 - EXTERIOR LOAD BEARING STRUCTURE WITH 5/8" USGS GREEN BD INTERIOR OVER CERAMIC TILE.
  - W6 - 5/8" TYPE X GYPSUM BD OVER 3-1/2" x 22 GA METAL STUDS OVER 5/8" TYPE X GYPSUM BD.

**3 SECTION**  
SCALE: 1" = 1'-0"



**1 SECTION**  
SCALE: 1/4" = 1'-0"



**2 SECTION**  
SCALE: 1/4" = 1'-0"